

# User Manual



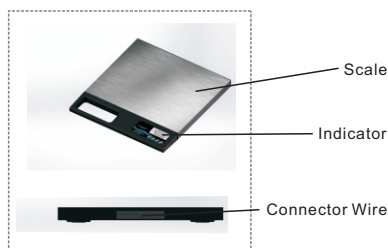
Thank you for purchasing the DIGIWEIGH DW-70 400lb. shipping scale. Please read all operating instructions carefully before use. Scales are precision measuring devices and should always be handled with proper care. To ensure years of reliable service, keep these simple tips in mind:

- ➔ Do not exceed the scale's maximum capacity. Overloading your scale can permanently damage it!
- ➔ Avoid exposure to extreme heat or cold. Scales perform best at normal room temperature. If temperatures have changed dramatically, calibration and adjustment may be necessary.
- ➔ Allow your scale to warm up for 30-60 seconds before performing calibration and adjustment (if available).
- ➔ Store your scale in a clean, dry location. Dust, dirt, and moisture can accumulate on the weighing sensors and electronics causing inaccuracy or malfunction.
- ➔ Avoid using your scale in close proximity to strong radio wave emitting devices such as computers, cash registers, and cordless phones.
- ➔ Always weigh on a flat and level surface, free from vibrations and drafts. The corner of a room is usually the most stable.
- ➔ Gently apply all items to be weighed. Do not drop items onto the weighing platform.
- ➔ Avoid dropping your scale. The warranty does not cover damage due to rough treatment or overload.
- ➔ Check the batteries first if you are having any trouble with your scale. This simple step can remedy most scale issues.
- ➔ Do not disassemble your scale. This product contains no user serviceable parts.

## I. Package included

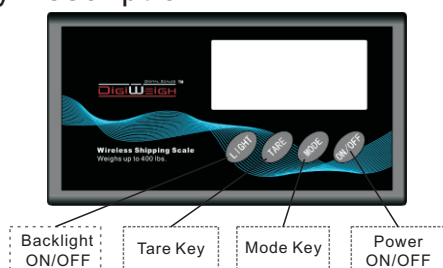
1. Scale
2. AA Batteries (×3)
3. 6V Power Supply
4. Wireless USB adapter/memory card (all in one)
5. Display Mounting KIT

## II. Structure Description



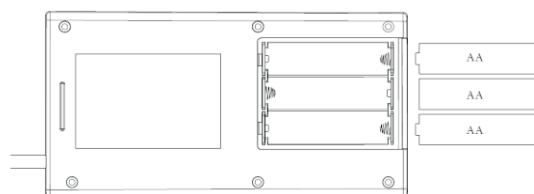
1. The data cable is hidden at the back of the scale. Take it out and connect it into the port of the Indicator before use Key Description
2. The Indicator can be pulled out and placed separately.

## III. Key Description



## IV. Battery Installation

1. Before using the scale for the first time, check the battery compartment and remove any plastic insulation strips or packaging that may be in place to prevent battery drainage during shipping/storage.
2. If you are replacing the batteries, make sure the positive and negative contacts are properly aligned.



## V. Operation

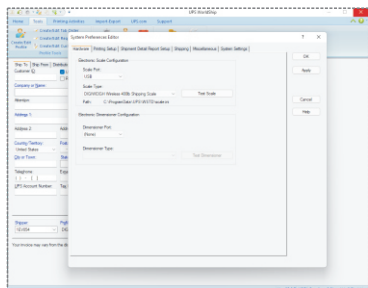
1. Must install the "UPS Worldship" or "Fedex Ship Manager" software on the computer first.
2. Insert the wireless USB adapter/memory card to the USB port of the computer.  
**(CAUTION: Always insert the USB card to the computer first before turn on the scale if removed, otherwise there is error may occurred)**
3. Open the "DIGIWEIGH" file on the USB card from the computer.
4. Run the appropriate application according to the tool you use. "UPS WorldShip" selects and run "UPS", "FedEx Ship Manager" selects and run "FedEx".
5. Take out the data cable from the rear of the scale and connect it into the data port on the indicator. If use without the battery, connect the power adapter to the power port of the indicator.

# User Manual

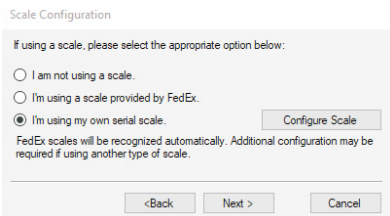


Youtube Installation Video

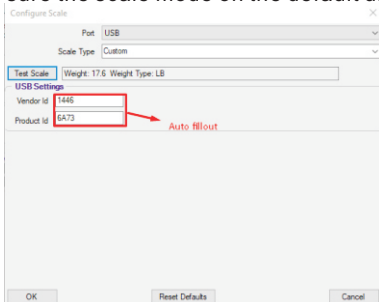
- Set up the scale on the UPS and Fedex Software:  
On the UPS "Worldship", select the scale port as "USB".  
Then the scale type is "DIGIWEIGH wireless 400Lb shipping scale".



On the Fedex "ship Manager"  
Select "I'm using my own serial scale"



Click "Configure Scale", make sure the Port: "USB"; Scale Type "Custom"; Vendor Id "1446"; Product Id "6A73"; Then put the object on the platform and click "Test Scale". Also make sure the scale mode on the default unit as "lb"



- Place the scale on a flat, level surface and press the ON/OFF key to turn the scale on.
- Once the start-up process completes, the display will show zero and ready to weigh.
- Place the object on the platform and Wait a couple seconds for the display to stabilize before taking a weight reading.

## VI. Changing the Unit of Measure

- Press the MODE key to change the scales displayed unit of measure.
- If the scale is turned off then back on, it will default to the last unit used.

UD Series Units:

kg (kilogram) → oz (ounce) → lb (pound)

## VII. Using the Tare Feature

You can use this scale's tare feature to subtract the weight of an empty container or vessel for net weight determination. NOTE: The weight of the container will subtract from the available capacity.

- Place the empty container or vessel on the weighing platform.
- Press the TARE key once. The display will then reset to zero. If the container is removed, it's weight will be displayed

as a negative number.

3. You may now fill the container with the quantity to be weighed. The display will show the net weight of the contents.

4. To return to normal weight display (gross weight), remove any items from the weighing platform and press the TARE key again to re-zero the scale.

## VIII. Troubleshooting

- Problem:** Scale will not turn on  
**Solution:** Check the batteries
- Problem:** Displayed weight fluctuates randomly  
**Solution:** Make sure your workspace is stable and free of any air currents or vibration
- Problem:** Displayed weight is inaccurate  
**Solution:** Perform a calibration adjustment

## IX. Error Codes

- OUTZ - Zero range has shifted. Perform calibration adjustment. If the problem persists, the load cell may be permanently damaged due to overloading.
- 88888 - Maximum capacity exceeded. Remove the extra weight to avoid damaging the load cell.
- Lo - Batteries are low. Replace the batteries.

## X. Calibration

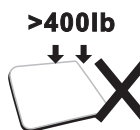
- The calibration process needs to use 5kg and 25kg weights, please prepare them before calibration.
- The indicator needs to be pulled out from the scale body during calibration.
- Press and hold the "MODE" key, and release the key when the indicator displays "0".
- When the indicator displays "1", place a 5kg weight in the center of the scale.
- When the indicator displays "2", remove the 5kg weight.
- When the indicator displays "3", place a 25kg weight in the center of the scale.
- When the indicator displays "25.00kg", and display flash twice.
- Remove the 25Kg weight and the calibration is completed.



Don't expose scale to moisture.



Don't drop or mistreat the scale.



Don't overload the scale. This will permanently damage it!



Don't leave weight on the scale when not in use.